



OR Wall PC's

Dual Screen



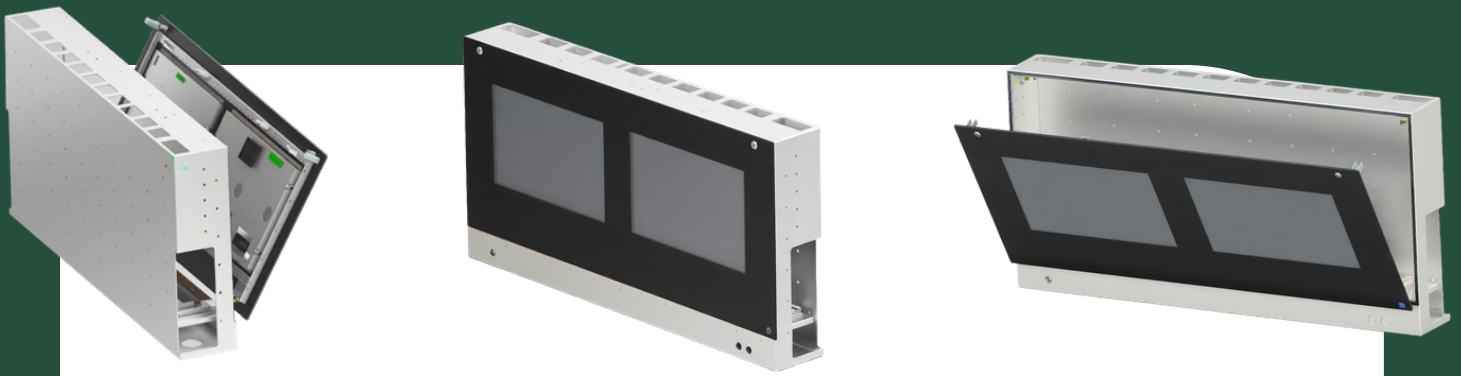
Dutch Design

Medical IT of Tomorrow

www.athena-medical.com

+31 85 876 9225

info@athena-medical.com



OR Wall PC's

Dual Screen Operating Room Panel

The Athena Dual Screen Operating Room Panel combines two 24-inch displays in a single, integrated housing, delivering a powerful and space-efficient visualization solution for modern operating rooms. Designed to support complex workflows, this dual-screen configuration allows multiple information sources to be viewed simultaneously without clutter or distraction.

The panel can be configured to match specific clinical and technical requirements, with options for two All-in-One PCs, one All-in-One PC combined with a medical monitor, or two medical-grade monitors. This flexibility makes the dual-screen solution ideal for scenarios where imaging, patient data, and system control need to be clearly separated yet viewed side by side.

Available as a wall-mounted or in-wall integrated solution, the dual 24-inch panel is built on medical-grade principles and Dutch design. With a clean, flat front, easy-to-clean surfaces, and seamless integration into the operating room, it supports a calm, organized environment where technology enhances surgical focus and efficiency.



Acropolis Systems BV
Ohmstraat 8
3861 NB Nijkerk
The Netherlands

+31 85 876 9225
info@athena-medical.com
www.athena-medical.com

